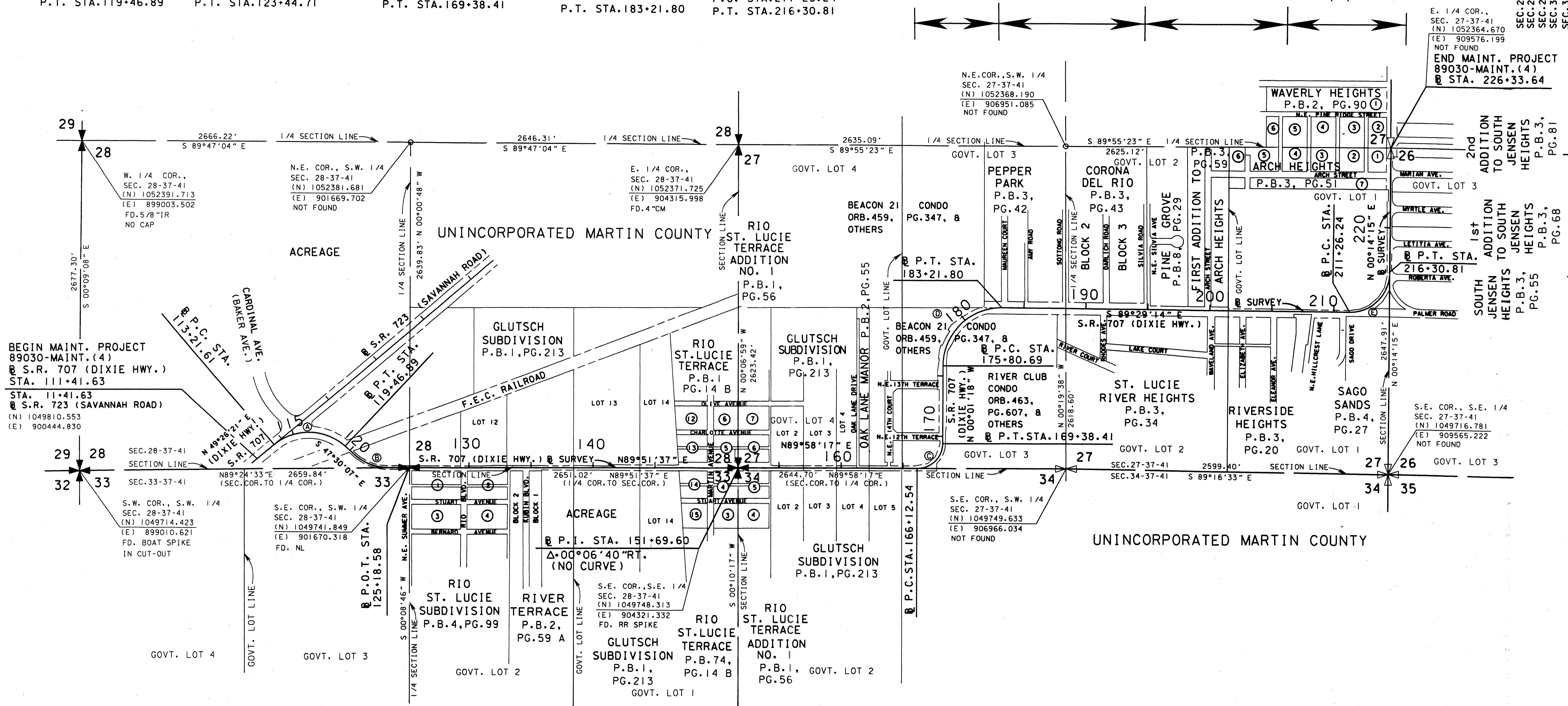


- ⓐ CURVE ⓐ**
P.I. STA. 117+03.61
Δ-83°03'32"RT.
D-13°17'01"
T-382.00'
L-625.28'
R-431.33'
C.B.-S 89°01'53" E
P.C. STA. 113+21.61
P.T. STA. 119+46.89
- ⓑ CURVE ⓑ**
P.I. STA. 122+08.68
Δ-42°38'16"LT.
D-14°54'24"
T-150.00'
L-286.03'
R-384.36'
C.B.-S 68°49'15" E
P.C. STA. 120+58.68
P.T. STA. 123+44.71
- ⓒ CURVE ⓒ**
P.I. STA. 168+19.99
Δ-89°59'35"LT.
D-27°36'59"
T-207.44'
L-325.87'
R-207.47'
C.B.-N 44°58'30" E
P.C. STA. 166+12.54
P.T. STA. 169+38.41
- ⓓ CURVE ⓓ**
P.I. STA. 180+54.11
Δ-90°32'04"RT.
D-12°12'58"
T-473.41'
L-741.11'
R-469.02'
C.B.-N 45°14'44" E
P.C. STA. 175+80.69
P.T. STA. 183+21.80
- ⓔ CURVE ⓔ**
P.I. STA. 214+48.02
Δ-90°16'31"LT.
D-17°53'29"
T-321.78'
L-504.57'
R-320.24'
C.B.-N 45°22'30" E
P.C. STA. 211+26.24
P.T. STA. 216+30.81

SHEET 8 SHEET 9 SHEET 10 SHEET 11

SEC. 26, TWP. 37 S., RGE. 41 E.
SEC. 27, TWP. 37 S., RGE. 41 E.
SEC. 28, TWP. 37 S., RGE. 41 E.
SEC. 33, TWP. 37 S., RGE. 41 E.
SEC. 34, TWP. 37 S., RGE. 41 E.
SCALE: 1" = 400'



SHEET 3 SHEET 4 SHEET 5 SHEET 6 SHEET 7

KEY SHEET

SEE SHEET 1 FOR LEGEND AND GENERAL NOTES
STATE ROAD 707 (DIXIE HWY.) FROM SAVANNAH ROAD TO ARCH STREET

MAINTENANCE MAP	FLORIDA DEPARTMENT OF TRANSPORTATION RIGHT OF WAY MAPPING	APPROVED BY: <i>J. Smith</i> DATE: 5/12/03	BY: PRELIM L. CEFOLIA DATE: 8/17/01	FED. PROJ. NO. N/A	SECTION 89030-MAINT.(4)	MAPS PREPARED BY: LB-696 KIMLEY-HORN AND ASSOCIATES	FIELD BOOK NO.'S: SEE SHEET 1
		DISTRICT RIGHT OF WAY SURVEYOR	FINAL L. CEFOLIA DATE: 4/03/03	STATE ROAD 707 (DIXIE HWY.)	MARTIN COUNTY	W.P.I. No. N/A	SCALE: 1" = 400'
		REVISION	CHECKED J. EDGAR DATE: 4/07/03	ITEM/SEGMENT NO. 4035911	SHEET 2 OF 12		